

## CPS Support Services

**Preparation for Adult Living (PAL) Services** helps youth ages 16 to 21 prepare for a successful transition to adulthood as they exit from foster care. Life skills trainings, Aftercare Room and Board assistance and case management services are available to eligible foster care students. PAL staff are located throughout the state and are the contact to connect foster care students with these services. A list of the lead PAL staff is located at: [http://www.dfps.state.tx.us/Child\\_Protection/Youth\\_and\\_Young\\_Adults/Preparation\\_For\\_Adult\\_Living/PAL\\_coordinators.asp](http://www.dfps.state.tx.us/Child_Protection/Youth_and_Young_Adults/Preparation_For_Adult_Living/PAL_coordinators.asp)

## Personal Documents/Records

PAL staff may help foster care students access or request their personal documents and school records needed when registering for school. Information on how students can request personal records is at:

[https://www.dfps.state.tx.us/txyouth/legal/personal\\_docs.asp](https://www.dfps.state.tx.us/txyouth/legal/personal_docs.asp)

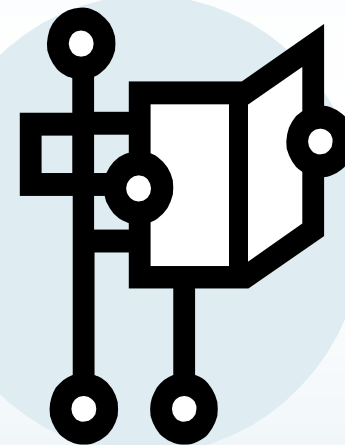
*Texas Transition Centers are available as a resource to both College Foster Care Student Liaisons and Students.*

*Transition Center locations and contact information is available at:*

<https://www.dfps.state.tx.us/youth/contacts/transition.asp>



**Handout for College Foster Care Student Liaisons and Students Formerly in Texas DFPS Foster Care 2016**



*Visit Texas Youth Connection to learn more about Texas DFPS Transitional Living Services and to get contact information:*  
[www.TexasYouthConnection.com](http://www.TexasYouthConnection.com)

## DFPS funded Housing Programs for Students that aged out of DFPS foster care at age 18

### Extended Foster Care Program

If a placement is available where the student is attending school, the student has the opportunity to voluntarily stay in CPS foster care until the age of 21 or if after leaving foster care they may volunteer to return to the Extended Foster Care program. This allows these students to complete their education goals while ensuring that there is stable housing and other supports to meet goals.

### Supervised Independent Living (SIL) Program

SIL is a component of the Extended Foster Care program that allows Students to live independently under minimally supervised living arrangements. Living arrangements may include apartments, non-college or college dorms, shared housing and host homes. Students must apply for and be accepted into the SIL program. SIL is also dependent upon availability.

### Healthcare Coverage-Former Foster Care Children (FFCC) Program

Once a youth ages out of Texas foster care at age 18 they are automatically enrolled in and are eligible to receive continuous Medicaid coverage through the age of 25.

There are 2 separate healthcare programs based on age:

- Young adults age 18 through 20 are enrolled in STAR Health
- Young Adults age 21 through 25 receive Medicaid through the STAR plan of their choice.

STAR Health and STAR Member Services are managed by Superior Health Plan, the exclusive provider for the Texas Health and Human Services Commission (HHSC).

**\*It is very important for Students to report any ADDRESS changes within 10 days of knowing the change.**

The student can contact **2-1-1** or **1-800-964-2777** to make changes and ask questions about their healthcare plans. [www.YourTexasBenefits.com](http://www.YourTexasBenefits.com) is also available to make changes to an account and to apply for other benefits.

## Post-Secondary Education Benefits

### Specifically for Texas Foster Care Students

### College Tuition and Fee Waiver

The college tuition waiver provides an exemption at Texas' **state supported** colleges and universities to various individuals in the **conservatorship of Texas DFPS**.

Eligible Individuals include:

- **FOSTER YOUTH**-must have been in DFPS conservatorship:
  - The day preceding the student's 18<sup>th</sup> birthday; or
  - The day of the student's 14<sup>th</sup> birthday, if also available for adoption on or after that day; or
  - The date the student graduates from high school or receives the equivalency of a high school diploma
  - These students may use the tuition waiver when enrolling in dual credit courses.
- **ADOPTED STUDENTS**
  - Adoption occurred on or after September 1, 2009; or
  - Adopted and the subject of an *adoption assistance agreement* for monthly financial assistance and Medicaid
- **PERMANENT MANAGING CONSERVATORSHIP (PMC)**
  - PMC of the student was granted to an individual other than the student's parent on or after Sept. 1, 2009.
- **YOUTH RETURNED TO THE LEGAL RESPONSIBILITY OF THE PARENT (Effective the Fall 2016 Semester)**
  - Youth age 14 and older in DFPS's PMC
  - Youth age 16 and older in DFPS's Temporary Managing Conservatorship (TMC)

\*With the exception of *adopted students with an adoption assistance agreement*, all other eligible students must activate (enroll in college) the tuition waiver **by their 25<sup>th</sup> birthday** for it to become a life time benefit.

**Note**-adopted students with an *adoption assistance agreement* do not have an age limitation to activate the tuition waiver AND these students must maintain a grade point average that satisfies the schools policies regarding eligibility for financial aid.

**PAL** staff (Form K908-1003) and Regional Adoption Staff issue tuition waiver letters. The number for Adoption Staff is **1-800-233-3405**.

## Education and Training Voucher (ETV) Program

The ETV program is a federally funded program that may provide up to \$5,000 a year to eligible students for education related expenses such as housing, utilities, childcare, books and equipment, computers/software and personal expenses. Students must be enrolled in college or vocational/ technical education programs.

Students apply at: [www.TexasETV.com](http://www.TexasETV.com)

*Students must have a high school diploma or GED to enroll in the ETV program.*

**ELIGIBLE STUDENTS** include:

- Youth in DFPS foster care who are at least **16** and likely to remain in foster care until age 18; or
- Youth who aged out of DFPS foster care but have not yet turned age **21**; or
- Youth not age 21 and are adopted from DFPS after age 16; or
- Youth not yet age **21** and entered Permanency Care Assistance (PCA) after age 16.

**Ages 21 up to age 23 continued eligibility**- A student who has applied for and been approved for the ETV program by his/her 21st birthday may remain eligible until the month of their 23rd birthday as long as they are continuously enrolled in school and are making satisfactory academic progress towards the student's academic program.

## DFPS Scholarships for Foster Care Students

- \*C. Ed Davis PAL Scholarship
- \*Freshmen Success Fund

**Visit the Texas Youth Connection website Education page for more details or inquire with PAL staff about these scholarship opportunities.**

<https://www.dfps.state.tx.us/tyouth/Default.asp>